

SOG[®] Bar Chairs

SOG bar chairs

USES

Commercial and civil applications such as deep slabs on ground and roadways.

DESCRIPTION

The SOG[®] chairs have been designed as an economical, lightweight, easy to use alternative to metal chairs with bases in deep slab situations, with no voids under the bar or mesh and no rust problems.

The easy clip-on system ensures the chair stays in place whilst the integral base saves time and labour placing separate bases.

The chairs have been load tested to exceed 500kg, and are available in 95, 100, 110, 120, 130, 140, and 150mm cover for bar or mesh up to 20mm.

APPLICATIONS

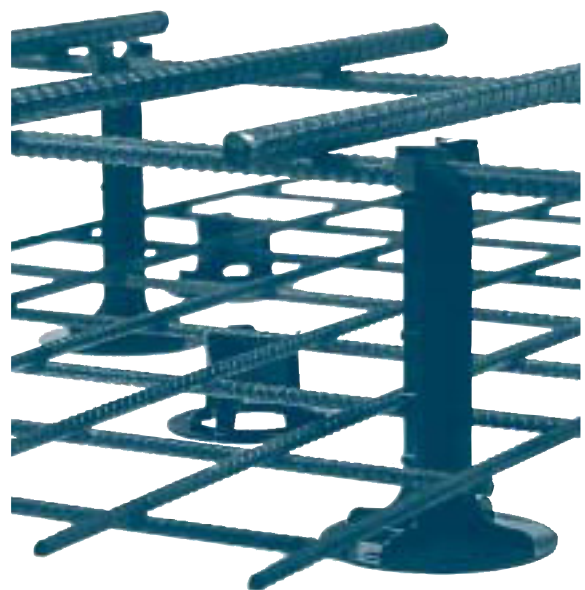
- Deep ground slabs
- Concrete roads and dowel joints

ADVANTAGES

- No void under bars
- Easy clip on
- Easy cover identification
- No rust problems
- Strong - withstands high loads
- Integral base - for easier installation

SUPPLY

95, 100, 110, 120, 130, 140 and 150mm cover for bar or mesh up to 20mm.

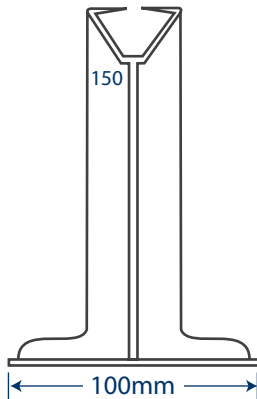


PROPERTIES

P/Code	Cover	Mass p/bag (kg)
BSOG095C	95	4.9
BSOG100C	100	5.0
BSOG110C	110	4.8
BSOG120C	120	5.3
BSOG130C	130	5.9
BSOG140C	140	6.1
BSOG150C	150	6.5

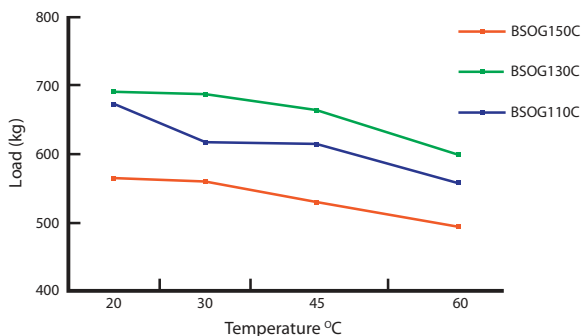
Packed in bags of 100, or bales of 1000.

All dimensions are nominal and expressed in millimetres.



LOAD PERFORMANCE

Tests were conducted at and are indicative of load performances, at temperatures indicated.



ADDITIONAL INFORMATION

Parchem provides a wide range of complementary products which include:

- concrete repair – cementitious and epoxy
- grouts and anchors – cementitious and epoxy
- waterproofing membranes – liquid applied, cementitious and bituminous sheet membranes
- waterstops – pvc and swellable
- joint sealants – building, civil and chemical resistant
- industrial flooring systems – cementitious and epoxy
- architectural coatings
- filler boards – swellable cork, bituminous and backing rod
- ancillary products

For further information on any of the above, please consult with your local Parchem sales office.

IMPORTANT NOTICE

A Material Safety Data Sheet (MSDS) and Technical Data Sheet (TDS) are available from the Parchem website or upon request from the nearest Parchem sales office. Read the MSDS and TDS carefully prior to use as application or performance data may change from time to time. In emergency, contact any Poisons Information Centre (phone 13 11 26 within Australia) or a doctor for advice.

PRODUCT DISCLAIMER

This Technical Data Sheet (TDS) summarises our best knowledge of the product, including how to use and apply the product based on the information available at the time. You should read this TDS carefully and consider the information in the context of how the product will be used, including in conjunction with any other product and the type of surfaces to, and the manner in which, the product will be applied. Our responsibility for products sold is subject to our standard terms and conditions of sale. Parchem does not accept any liability either directly or indirectly for any losses suffered in connection with the use or application of the product whether or not in accordance with any advice, specification, recommendation or information given by it.