

(Previously known as Emer-Proof HDPE)

## High performance, bituminous self adhesive waterproofing membrane

### Uses

Proofex 3100 is used to sub-structure, basements, retaining walls and tunnels.

### Advantages

- Self adhesive - allows installation without the use of heating torches while providing a fully bonded membrane system
- Uniform thickness - eliminates any likelihood of thin application commonly found with liquid applied membranes
- Cross laminated High Density Polyethylene (HDPE) carrier film ensures dimensional stability whilst allowing adequate flexibility during installation and service
- Selvedge strip provides bitumen to bitumen seal at longitudinal joints ensuring watertight seal

### Description

Proofex 3100 is a self-adhesive bituminous membrane incorporating a cross laminated HDPE film. The bitumen compounds used to manufacture the product are modified with SBS to promote maximum adhesion to the substrate.

### Standard Compliance

BRANZ Appraised: Appraisal No. 1035 (2018)

### Specification Clause

Where so designated on the drawing, surfaces shall have a self-adhesive modified bituminous waterproof membrane applied. The membrane shall be 1.5mm total thickness, incorporate a cross laminated HDPE film and utilise a selvedge strip to ensure bitumen to bitumen bond at longitudinal joints.

Such a product is Proofex 3100 as supplied by Fosroc. Areas shall be prepared and the membrane applied in accordance with current Proofex 3100 data sheet, paying attention to priming requirements.

Both the manufacturer and supplier must be ISO 9001 accredited.

## Properties

Test method	Typical Values
Thickness ASTM D751	1.5mm ± 0.20
Total Weight ASTM D751	1.6kg/m <sup>2</sup> ± 0.16
Breaking Strength ASTM D1000	5.0 N/mm
Elongation at Break ASTM D1000	260%
Puncture Resistance ASTM D4833	>100N
Adhesion Peel Strength ASTM D1000	3.0 N/mm min
Water Vapour Transmission ASTM E96	0.30 g/m <sup>2</sup> .24hr
Application Temperature	15°C to 45°C
Service Temperature	-10°C to 90°C
Peak Temperature	95°C

## Application Instructions

### Surface preparation

All surfaces to which Proofex 3100 is applied must be smooth and free from contaminants and any loose material. Rough concrete should be "faired up" before membrane application.

### Priming

Fosroc Primer 24 should be applied at the rate of 6 to 8m<sup>2</sup> per litre to surfaces which will have Proofex 3100 applied. The coverage rate for the primer will vary depending on the porosity of the surface being treated. Allow the primer to dry for a minimum of 30 minutes and a maximum of 8 hours, at temperatures of 25°C and above; the primer must be touch dry. Longer drying times will be required at lower temperatures. Priming should only be carried out on surfaces which will be covered with Proofex 3100 on the same day.

# Fosroc® Proofex® 3100

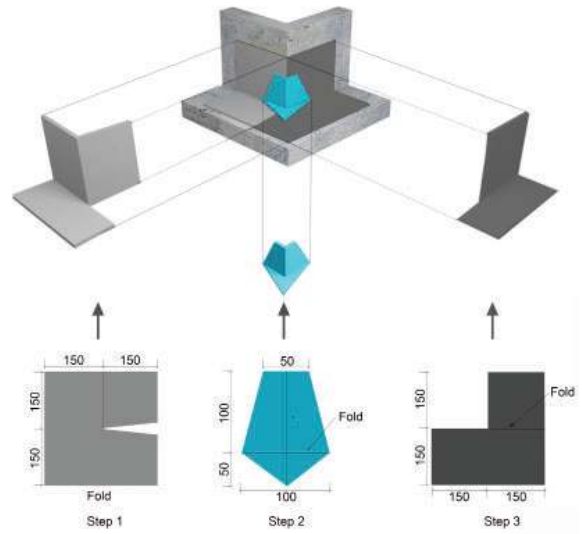
## Application

Planning the installation of the membrane is important to ensure joins occur in suitable locations and not at corners and penetrations.

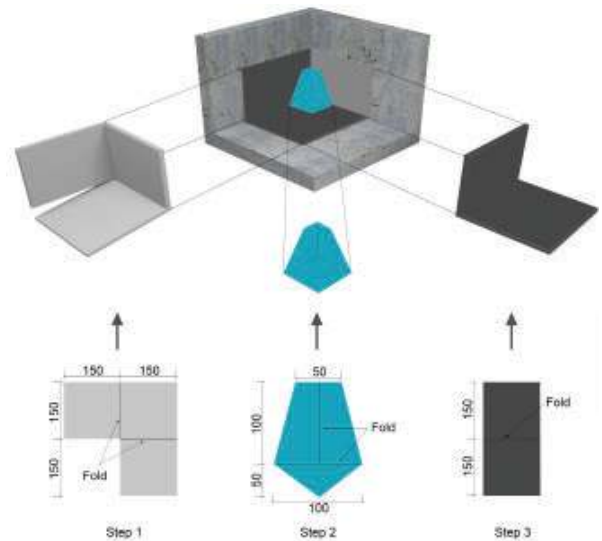
Longitudinal overlaps should be 50 - 60mm and transverse laps 70 - 80mm. Unroll and cut membrane to the required length.

Application of the membrane should always start from the lowest point on a surface to ensure laps are self-flashing. Apply suitable lengths of Proofex 3100 membrane by first carefully aligning the roll and applying an initial 300mm of material, then pull the siliconised release paper and press the membrane on to the prepared surface. Take care not to incorporate air bubbles under the membrane or wrinkles in the membrane. Using a small roller, ensure that all edges and overlaps are forming proper seals and installed in a manner where they will be self-draining.

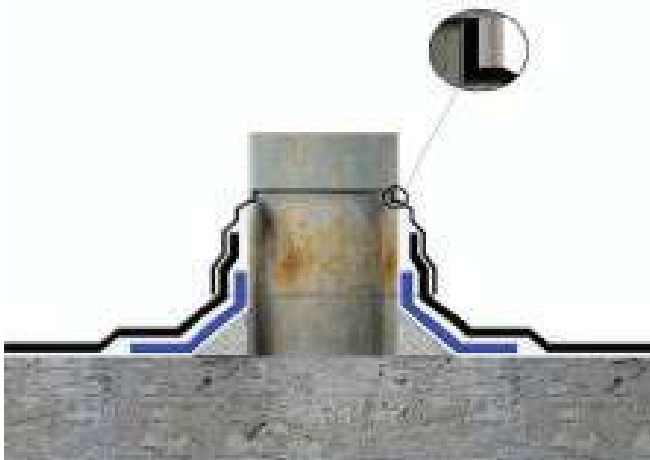
When finishing the membrane into perimeter flashings or around penetrations, use Nitoseal MB175, a bituminous rubber mastic to assist in achieving a waterproof seal.



External Corner Detail



Internal Corner Detail



Pipe penetration

## Protection

Proofex 3100 is not suitable for long term UV exposure. The membrane should therefore be protected in some way within 3 months of application.

If the membrane is to be covered with a concrete topping slab, a slip sheet system must be used.

When the membrane is to be backfilled such as with basement applications, Proofex 3100 should be protected from physical damage by using Proofex Sheetdrain 81 drainage/protection system also available from Fosroc.

## Limitations

Do not apply Proofex 3100 to uncured “green” concrete or to concrete with high moisture content levels. In such applications blistering of the membrane may occur due to vapour pressure building up at the interface of the membrane and the substrate. Similarly, Proofex 3100 should not be applied to substrates subject to hydrostatic pressure from below the membrane.

# Fosroc® Proofex® 3100

---

## Supply

<b>Proofex 3100:</b>	1m x 20m roll
Material code:	FC007067-UNIT

Fosroc Primer 24:	
4 litre pail	FC020500-4L
20 litre pail	FC020500-20L

## Coverage

<b>Proofex 3100:</b>	approx. 18.9 m <sup>2</sup> / 20 m roll allowing for overlaps
----------------------	--

<b>Fosroc Primer 24:</b>	6 - 8 m <sup>2</sup> / litre
--------------------------	------------------------------

Note: No allowance has been made for wastage.

## Storage

Store in dry conditions not exceeding 30°C. Storage above this temperature may reduce storage life. Membrane rolls must be stored upright.

### Important notice

A Safety Data Sheet (SDS) is available from the Fosroc website. Read the SDS and TDS carefully prior to use as application or performance data may change from time to time. In emergency, contact any Poisons Information Centre (phone 13 11 26 within Australia) or a doctor for advice.

### Product disclaimer

This Technical Data Sheet (TDS) summarises our best knowledge of the product, including how to use and apply the product based on the information available at the time. You should read this TDS carefully and consider the information in the context of how the product will be used, including in conjunction with any other product and the type of surfaces to, and the manner in which, the product will be applied. Our responsibility for products sold is subject to our standard terms and conditions of sale. Parchem does not accept any liability either directly or indirectly for any losses suffered in connection with the use or application of the product whether or not in accordance with any advice, specification, recommendation or information given by it.



constructive solutions

\*Sold under license from Fosroc International Limited.  
Fosroc, Proofex and the Fosroc logo are trade marks of  
Fosroc International Limited, used under license.

### Parchem Construction Supplies Pty Ltd

7 Lucca Road, Wyong NSW 2259

Ph: 1800 812 864

www.fosroc.com.au

ABN 80 069 961 968

Distributed in New Zealand by: Concrete Plus Ltd

150 Hutt Park Road Gracefield Ph: 0800 657 156

www.fosroc.co.nz

NZBN 9429033691282